

# POWERHOUSE MX™ ACHE TIMING SPROCKETS

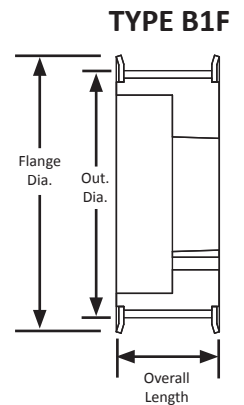
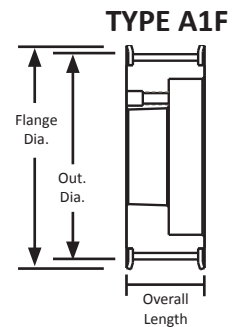
(Compatible with Poly Chain® GT® Carbon belts)

**14 mm Pitch**  
**For 20 mm Wide Belts**  
**Iron**  
**Black Oxide Plating**  
**QD® Style**

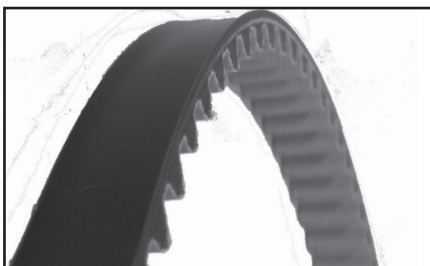
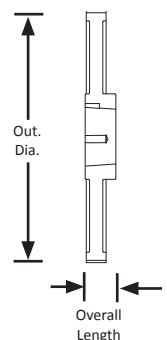


**For ACHE (Air-Cooled Heat Exchanger) Applications**

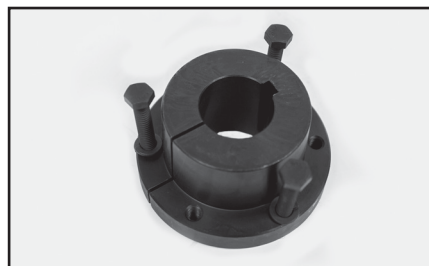
Part Number	No. of Teeth	Type	Pitch Dia. (in)	Out. Dia. (in)	Bushing	Face Width (in)	Overall Length (in)	Wt. Ea. (Lbs.)	Material
F28-14MX20-SK	28	A1F	4.912	4.802	SK	1.359	1.359	4	Ductile Iron
F29-14MX20-SK	29	A1F	5.088	4.978	SK	1.359	1.359	5	Ductile Iron
F30-14MX20-SK	30	A1F	5.263	5.153	SK	1.359	1.359	5	Ductile Iron
F31-14MX20-SK	31	A1F	5.439	5.329	SK	1.359	1.359	6	Ductile Iron
F32-14MX20-SK	32	A1F	5.614	5.504	SK	1.359	1.359	6	Ductile Iron
F33-14MX20-SK	33	A1F	5.790	5.680	SK	1.359	1.359	6	Ductile Iron
F34-14MX20-SK	34	A1F	5.965	5.855	SK	1.359	1.359	7	Ductile Iron
F35-14MX20-SK	35	A1F	6.141	6.031	SK	1.359	1.359	8	Ductile Iron
F36-14MX20-SF	36	B1F	6.315	6.206	SF	1.359	1.750	8	Ductile Iron
F140-14MX20-E	140	C3	24.560	24.452	E	1.359	2.500	67	Grey Iron
F168-14MX20-F	168	C3	29.475	29.365	F	1.359	2.500	94	Grey Iron
F180-14MX20-F	180	C3	31.580	31.470	F	1.359	2.500	106	Grey Iron
F200-14MX20-F	200	C3	35.089	34.979	F	1.359	2.500	115	Grey Iron
F224-14MX20-F	224	C3	39.300	39.190	F	1.359	3.000	130	Grey Iron



**TYPE C3**



For matching 14 mm Powerhouse MX™ pitch belts, see page 249.



For matching QD® bushings, see page 324.